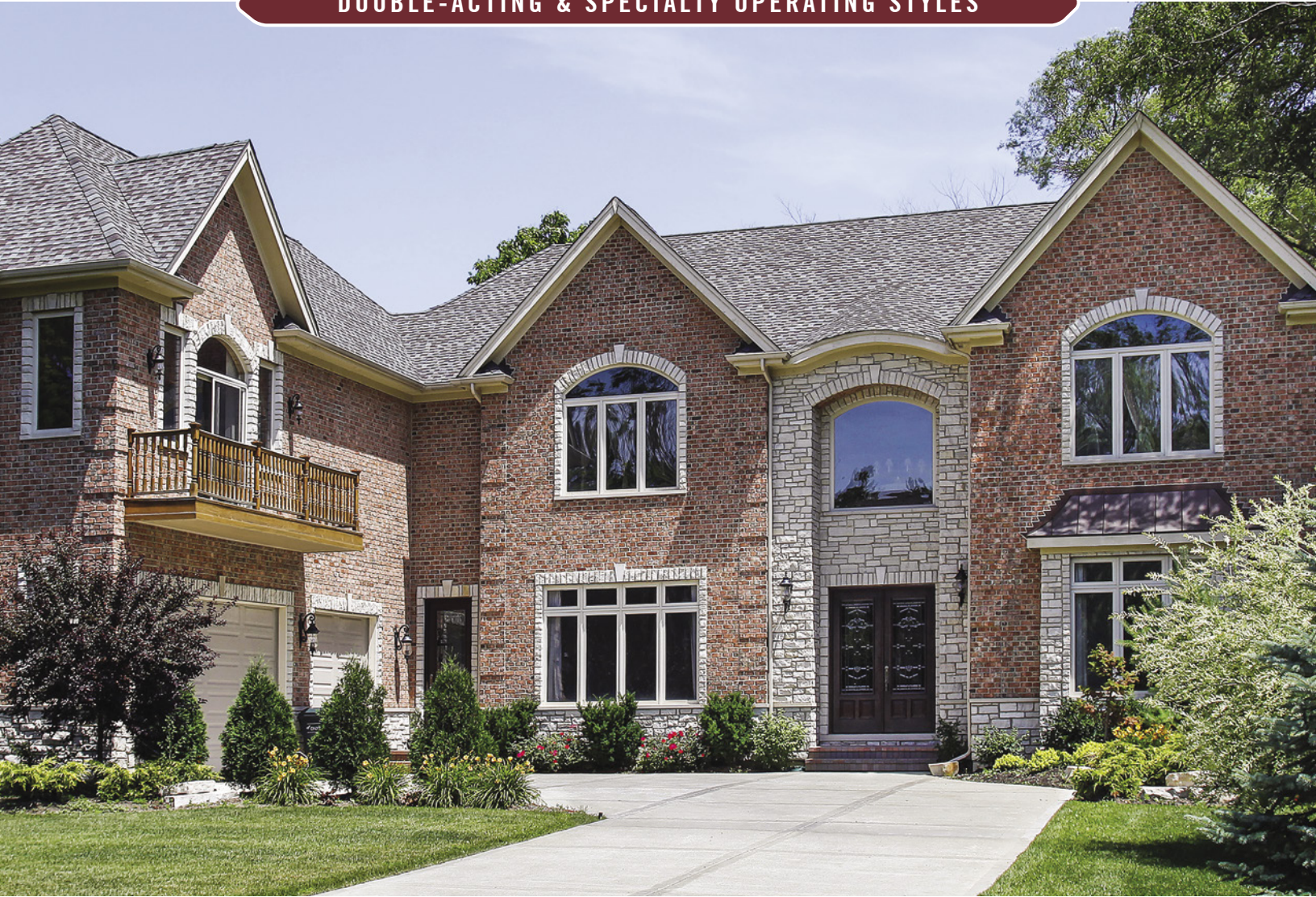




# CORONADO

PREMIUM COMPANION VINYL WINDOWS

DOUBLE-ACTING & SPECIALTY OPERATING STYLES



# CORONADO

Anlin's Coronado series includes double slider, double hung, casement, awning, bay and bow and garden windows. While providing the additional window depth required for these operating styles, Coronado windows are designed to look "right at home" when paired with windows from Anlin's Del Mar, Catalina and Panoramic series.

## A Select Dealer Network

To ensure your satisfaction, Coronado windows are only sold and installed by a limited number of authorized dealers who have been trained and certified by Anlin.



### Energy Saving Technology

Coronado windows are designed and built for optimum performance using the latest energy saving technology, providing maximum savings in any climate.

### Exceptional Styling and Quality

The features, components and craftsmanship that are designed and built into Coronado windows will make you feel great about your home. It's quality that even increases resale value.

### A Superior Warranty

Coronado windows are backed by the most inclusive lifetime warranty in the industry. Should your windows ever require warranty repairs, Anlin will make them, free of charge, for as long as you live in the home. Anlin's lifetime warranty coverage is also transferable to one subsequent homeowner should you sell your home. That's two lifetimes of truly worry-free windows.

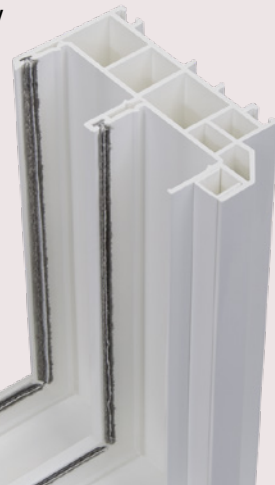


BETTER PERFORMANCE IS DESIGNED INTO EVERY FEATURE.

# LEADING FEATURES

## Saving Energy

- ▶ Thicker vinyl and more inner chambers help reduce the flow of heat and cold through the frame.

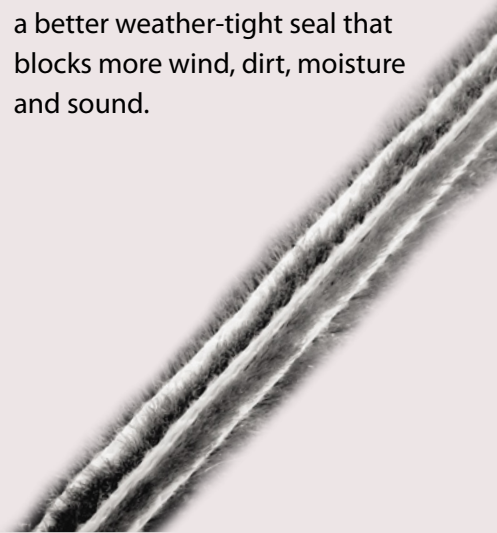


- ▶ Next Generation high performance glazing system delivers unparalleled energy efficiency.

**INFINIT-e PLUS™**  
HIGH PERFORMANCE GLAZING SYSTEM

**QUADRATHERM™**  
ULTIMATE DUAL PANE INSULATION SYSTEM

- ▶ Triple fin weatherstrip creates a better weather-tight seal that blocks more wind, dirt, moisture and sound.



## Smooth Operation and Easy-Clean Glass

- ▶ Double sliding windows are supported by 4 Celcon rollers and 4 extra large stainless steel axles for a lifetime of smooth operation.



Sliding Window Rollers

- ▶ Coronado windows built with the Infinet-e Plus™ insulated glass units come standard with an easy-clean coating on the outside of the glass. This feature makes the outside windows easier to clean and helps them stay cleaner longer.

*With easy-clean coating* | *Without easy-clean coating*



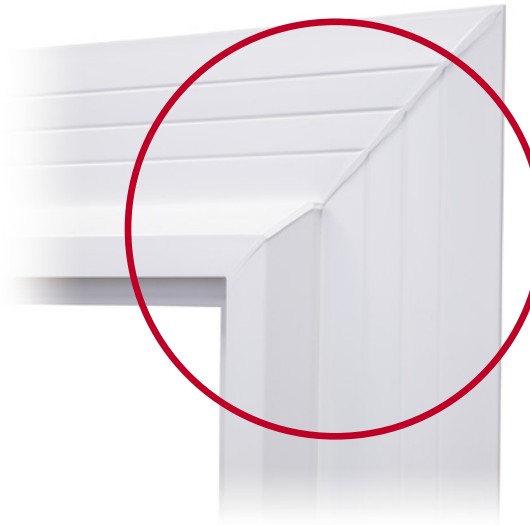
- ▶ Double hung windows features sashes that tilt in for easy cleaning of the outside glass and a stainless steel constant-force balance system that ensures easy, smooth operation.



Tilt-in Feature



Window Balance System



## Appearance and Value

- ▶ The corners of Coronado frames are precision mitered at 45 degrees, welded and cleaned by computer-controlled technology. Then every corner receives the focused attention of a trained craftsman who does a hand touch-up for an especially smooth finish.

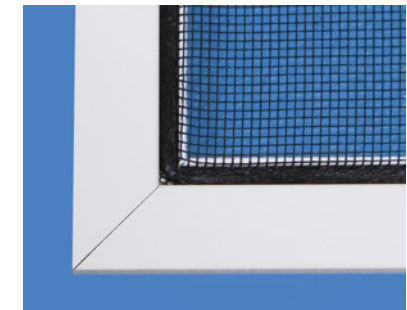
- ▶ Frames and sashes with matching beveled accents create a more polished, sleek and sophisticated look.



- ▶ Enjoy the visual appeal and balance of even sight lines. This means that when you look at the window, the size and shape of the glass area are the same on both sides of the window.

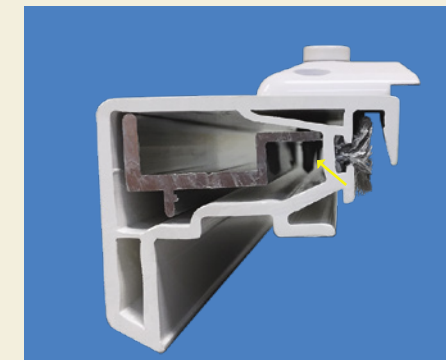


- ▶ Coronado screens have mitered corners to match the frames. The appearance is far more elegant than screens made with square, plastic corner inserts.



## Security

*Coronado windows pass the stringent forced entry resistance test.*



- ▶ All lock hardware is securely attached to metal reinforcement hidden inside the vinyl.



- ▶ Built-in ventilation latches allow your windows to be open a few inches for ventilation without being able to be opened further.



- ▶ Optional 1/4" stainless steel sash dead bolt provides added security on sliding windows.

# SAVING ENERGY

SPENDING LESS ON ENERGY LETS YOU SPEND MORE ON THE THINGS YOU LOVE.



Two things can send energy bills skyward: heat passing from one side of your window to the other; and solar heat sneaking into your home via the greenhouse effect on hot, sunny days. All energy efficient windows try to reduce one or both of these energy-sapping effects. For homeowners looking to replace their windows, there are two essential performance measurements to consider. The first is U-Factor, and the second is Solar Heat Gain Coefficient (SHGC).

U-Factor is the name for the standard measurement of a window's resistance to heat being transferred through the window. The lower the number, the greater the insulation capability of the window.

Solar Heat Gain Coefficient (SHGC) is the name for the standard measurement of a window's ability to keep solar heat from passing through the glass and warming your home via the greenhouse effect. The lower the number, the greater the job the window does of rejecting solar heat gain.



## Coronado Thermal Performance Numbers

Window & Insulated Glass System	Total Unit U-Factor	Solar Heat Gain Coefficient (SHGC)
Next Gen <b>INFINIT-E PLUS</b> with Argon Gas	0.27	0.21
Next Gen <b>QUADRATHERM</b> with Argon Gas	0.24	0.21
Next Gen <b>SunShield EXTREME</b> with Argon Gas	0.28	0.14

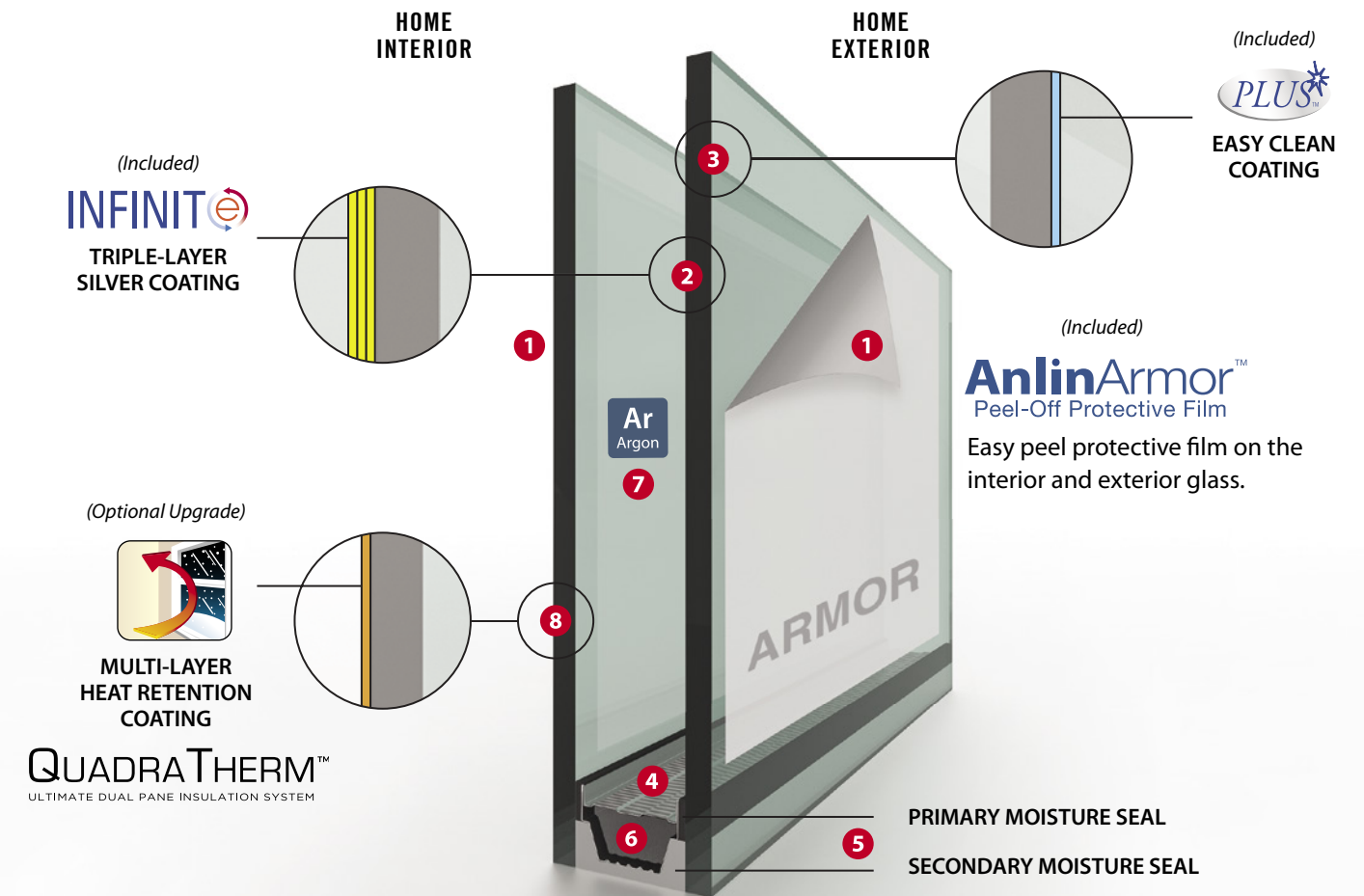
All Anlin QuadraTherm™ and Infit-e Plus™ insulated glass systems have been tested to block the transmittance of ultraviolet (UV) light by 95%. You will find the U-Factor, SHGC and UV numbers for every Anlin window at anlin.com.

## Energy Ratings for Coronado Windows

As an example, here are the thermal performance numbers for Coronado double slider windows. (For both U-Factor and SHGC, the smaller the number, the more energy efficient the window.)

For extreme heat or sun exposure, such as the Arizona desert or any elevation exposed to the scorching sun, SunShield Extreme (solar reflective tinted blue/gray coating) offers the best protection.

## Coronado Windows Include Anlin's Next Generation Glazing System



- 1 AnlinArmor™** – From manufacturing and delivery, to jobsite through installation, Homeowners are guaranteed to receive their new windows in pristine condition.
- 2 INFINIT-E™ Triple-Layer Silver Coating** – Reflects and substantially reduces the amount of solar heat entering the home, from a hot summer sun.
- 3 PLUS™ Easy Clean Coating** – A permanent exterior coating that harnesses the sun's UV rays to break down dirt, keeping your windows cleaner longer.
- 4 PLATINUM ELITE™, NEXT GENERATION SPACER** – Known as Aviation alloy, Platinum Elite's patented 2-piece, laser welded corrugated design, is the most advanced, thermally efficient, commercial rated warm edge spacer in the industry.
- 5 TRUE DUAL SEAL** – An engineered thermoplastic moisture vapor barrier (black), fused with a commercial rated 2-part structural silicone (gray), assures lifetime durability.
- 6 MOISTURE STOP** – Advanced Silica drying agent continuously extracts any moisture vapor from within the unit.
- 7 ARGON GAS** – An invisible layer of insulation slows the transfer of heat through the Insulated glass, increasing thermal efficiency up to 15%. (Optional in Infit-e Plus, Included in QuadraTherm)
- 8 QUADRATHERM™** – Multi-layer heat retention coating helps keep more warmth inside your home on cold days and nights. (Optional Upgrade)

# WITH CORONADO WINDOWS THE CHOICE IS YOURS



## Bay and Bow Windows

Add a bay or a bow window to make any room feel larger, broaden your view and welcome in more light. Both styles allow combinations of fixed picture windows and operating windows.

## Awning Windows

Hinged at the top and opening outward, awning windows let you enjoy ventilation even when it's raining. A foldaway crank handle makes opening and closing awning windows an easy, one-hand operation.



## Double Hung and Double Slider Windows

Coronado's "double-acting" windows allow you to open both sashes for maximum ventilation; great for rooms with only one window. With double hung windows, which operate vertically, both sashes tilt in to make cleaning the outside glass exceptionally convenient.



Double slider windows allow both sashes to operate left and right and make ideal kitchen pass-through windows.



## Casement Windows

Casement windows are hinged on the side and swing outward like a door. A smooth operating crank handle facilitates easy operation with one hand, perfect for harder to reach places like over countertops.

## Garden Windows

Garden windows are a popular choice to brighten a kitchen or bathroom. They open the room to more sunlight and provide a perfect shelf for plants and décor.



Coronado windows have a 3 1/4" frame depth to accommodate the function of its operating styles and are the perfect companion to Anlin's Del Mar, Catalina and Panoramic series.

### Exterior Color Options

Love the look of your home right down to the color of your window frames. With Anlin, you've got a lot of choices!



White (Standard)  
 Exterior and Interior



Tan (Standard)  
 Exterior and Interior

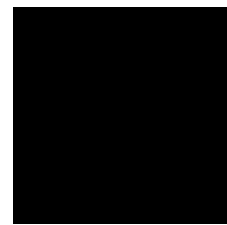


Adobe (Optional)  
 Exterior and Interior

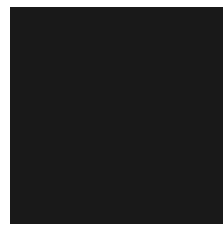
## THERMACOAT™

SOLAR REFLECTIVE COLORS

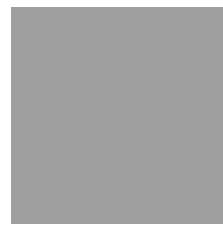
Exterior colors that bring out the designer in you.



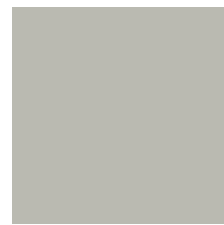
Architectural Black



Architectural Bronze



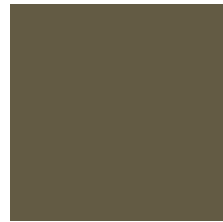
Architectural Silver



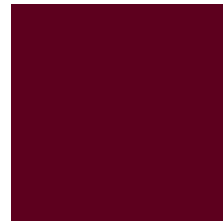
Classic Gray



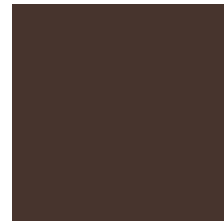
Espresso



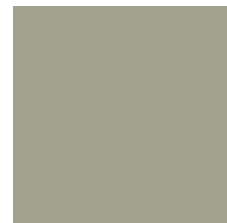
Taupe



Red Pepper



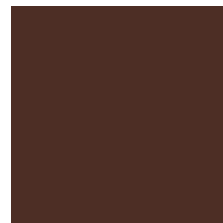
Rose Wood



Desert Tan



Sandstone



Divine Wine



Forest Green

*Colors shown are printed representations of ThermaCoat™ Solar Reflective Colors for comparison purposes only. For actual color, view ThermaCoat™ vinyl samples (provided by dealer) in natural daylight.*



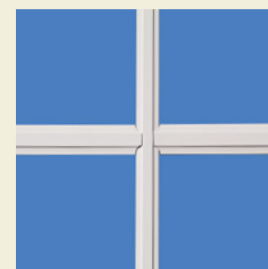
### Grid Styles and Patterns

Grids allow you to create just the right architectural look that you want for your home.

#### ► Grid Styles



5/8" Flat



5/8" Sculptured



1" Sculptured

#### ► Grid Patterns



Colonial



Perimeter



Queen Anne



### Lock Options

The following lock types, available on double hung and sliding windows, pass the stringent forced entry test.

#### ► Pull-Tight Cam Lock

(Available in White, Tan, Adobe, Bronze, Brushed Nickel, and Polished Brass.)

Pull the window sashes together for a weather tight seal.



Bronze (Optional)



Brushed Nickel (Optional)



Polished Brass (Optional)

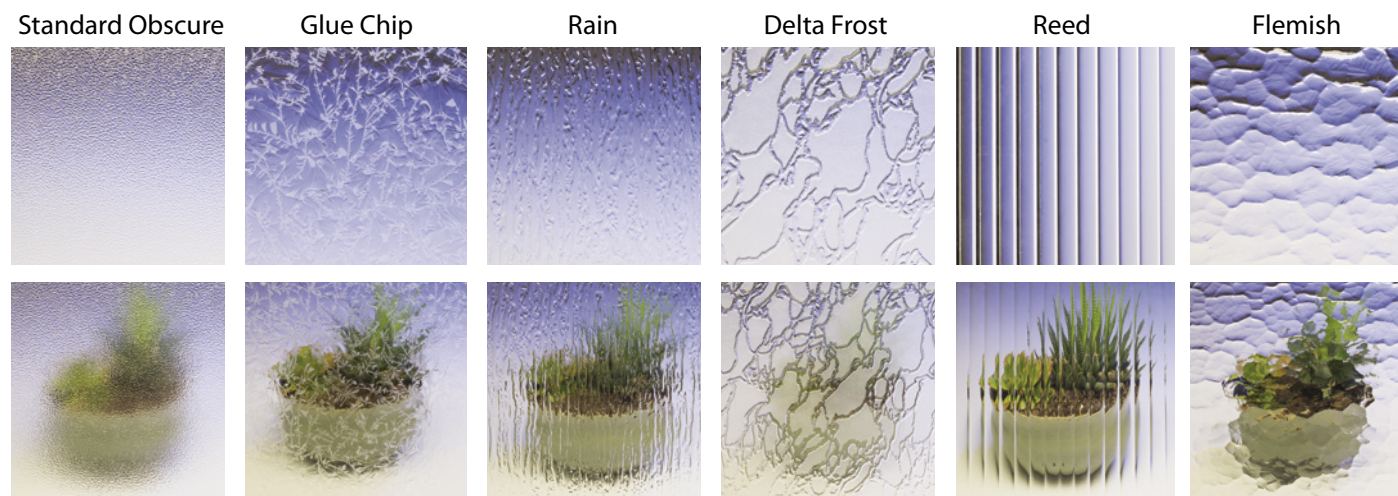
#### ► True Action Lock

This optional system automatically locks when the sash is closed. Available in White, Tan, Adobe, Bronze, Brushed Nickel, and Polished Brass.

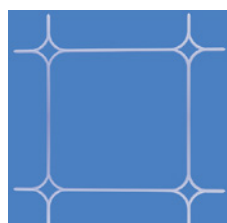


### Decorative Glass Options

► Coronado windows are available with any of the following decorative glass patterns.



► Diamond cut decorative beveled glass, available in a variety of styles and patterns.

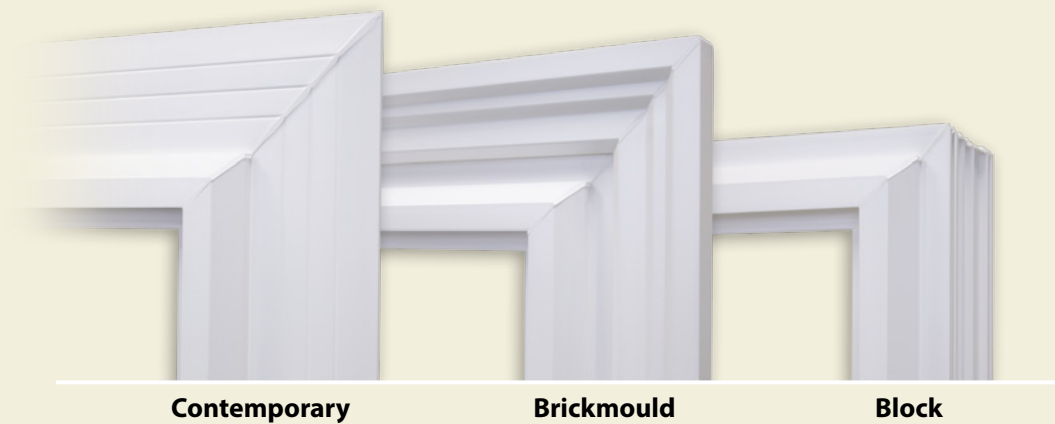


#### ► Safety / Tempered Glass

All Anlin replacement windows can be ordered with optional tempered glass, which may reduce the potential for serious injury when broken.

### Frame Options

Choose a frame style that gives your home the look you love.



Contemporary

Brickmould

Block

### Sound Suppression Technology

Many homeowners add Coronado's optional sound package. In addition to saving energy, the sound package greatly reduces the transmission of noise from the outside of your home to the inside – making your home even quieter. You may choose to add the sound package to windows throughout your home, or only to windows facing a street or other source of noise.



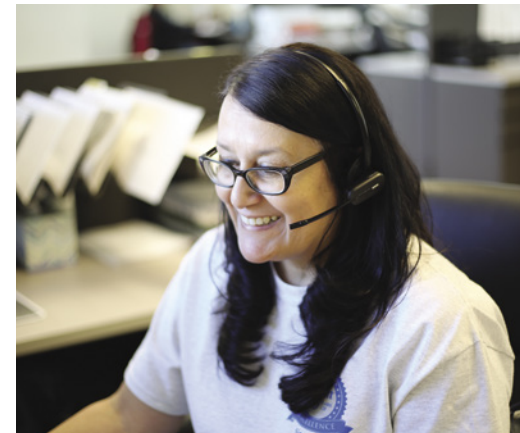
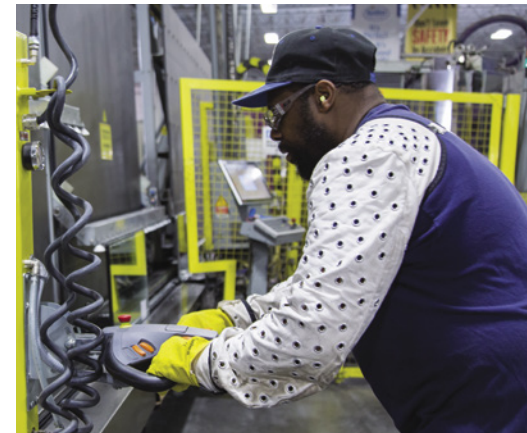
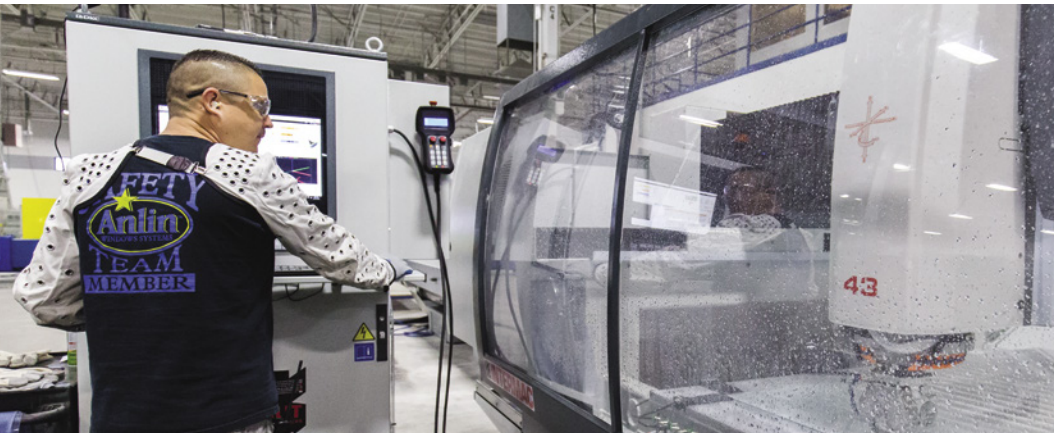


# Anlin

Windows · Doors

### 5-Star Service

We've always believed that how we stand behind our products is every bit as important as how we build them. Should your Anlin windows or patio doors ever need service, Anlin has its own team of highly trained technicians and a fleet of service vehicles to ensure a great experience. From the first phone call to the completed repair, you'll appreciate Anlin's commitment to your satisfaction.



### Recognized for Manufacturing Excellence

Since Anlin Windows & Doors was founded in 1990, we've continually invested in leading edge product design, technology and manufacturing practices. As a result, we've been recognized as a Top 100 U.S. Manufacturer by Window & Door Magazine and have been selected as the Industrial Business of the Year by the U.S. House of Representatives and Small Business of the Year by Congress and the California State Legislature.

*“ From the way we build your windows and patio doors to the way we stand behind them – we look forward to creating an exceptional experience. ”*

We encourage you to visit online review and opinion sites, such as YELP and others, to learn why so many homeowners give Anlin a 5-Star rating for our products and service.

All Anlin windows and doors are AAMA and NFRC certified, and ENERGY STAR qualified.







# CORONADO

WINDOWS AT A GLANCE

- ▶ The beauty of even sight lines
- ▶ Superior quality and craftsmanship
- ▶ The industry's most inclusive warranty
- ▶ Exceptional U-Factor and SHGC ratings



Anlin Windows & Doors • 1665 Tollhouse Rd. • Clovis, CA 93611  
800-287-7996 • [www.anlin.com](http://www.anlin.com)